

ORIENTEERING

Bulletin 2



Table of Contents

1.ORGANISATION.....	4
Organizer	4
ISCD Orienteering Sport Director	4
Games and Venue Management.....	4
Competition Management.....	4
2.OVERVIEW	5
Urban Events	5
Hibiya Prak · Hibiya Area.....	5
Forest Events.....	5
Izu Oshima Island (Ura-Sabaku Desert)	5
S c h e d u l e	5
Rules	8
Classes and number of the participants	9
Training Opportunities and Model Event	9
Urban model & technical model	9
Forest model and training	9
Location map of the terrains	10
Competition/Model event	10
Embargoed Area	11
Terrain, hazards & climate.....	13
Maps	15
- Scales, contour interval, winning time, course information, maximum running time for each event are as follows;.....	16
Mappers and course planners:	17
Special symbols	17
Previous map: URL will be given.	18
Punching and measurement system	19
Clothing Regulations	19
Event arena and the quarantine	19
Procedure for the protest.....	20
3 Survive	21
food & accommodation	21
Hibiya.....	21
Oshima	21

Details Transportation.....	23
Games Service Guide.....	25

Welcome Message

Dear Athletes and Team Officials,

We are delighted to welcome you to Tokyo and thank you for your participation in TOKYO 2025 DEAFLYMPICS.

This Bulletin 2 has been prepared to provide you with essential information to ensure your experience here is smooth, productive, and enjoyable.

We have been working diligently to support all delegations and create an environment where you can perform your best and feel at home. We hope that your time here will be both successful in competition and rich in cultural exchange and friendships.

We wish you a safe, memorable, and inspiring stay.

About this Bulletin 2

Published in October 2025, this Bulletin 2 offers a summary of competition-related material about Orienteering competition at TOKYO 2025 DEAFLYMPICS and provides a variety of information aimed at helping teams in planning and preparation.

1.ORGANISATION

Organizer

International Committee of Sports for the Deaf (ICSD)

ISCD Orienteering Sport Director

Tomas Kuzminskis

Games and Venue Management

Tokyo Sport Benefits Corporation Deaflympics Preparation and Operation Office

Competition Management

Japan Orienteering Association

2.OVERVIEW

Urban Events

Hibiya Park・Hibiya Area

Address: 1 Hibiya-Koen, Chiyoda City, Tokyo

Latitude and longitude: N35.6738, E139.7562

Forest Events

Izu Oshima Island (Ura-Sabaku Desert)

Izu Oshima Island

Address: Urasabaku, Oshima Town, Tokyo

Latitude and longitude: N34.7371, E139.4243

Schedule

Date	Time	Event	Venue	Note
11 NOV		Arrival and accreditation	National Olympics Memorial Youth Center (NOMYC)	ID distribution commences
13 NOV	9:00	Deadline of final name entry for the Sprint Distance, Sprint Relay, and Super Sprint Relay	Web form	Web form URL and detail will be provided by the final information.
14 NOV	10:00-14:00	Model event Technical model and training (urban)	National Olympics Memorial Youth Center (NOMYC)	
	15:00-16:00	Technical Meeting	NOMYC	
15 NOV		The Sprint Distance		

Date	Time	Event	Venue	Note
	6:30 / 7:00	Quarantine deadline	Hibiya Park (Hibiya Library & Museum : HLM)	6:30 for those teams directly coming to the Quarantine by themselves, and 7:00 for those who coming by official transport.
	8:00-10:00	The Sprint Distance	Hibiya Park	
	11:00-	Prize giving ceremony	Hibiya Park	
	12:00	Deadline for name change for Sprint Relay & Super Sprint Relay	Web form	Web form URL and detail will be provided by the final information.
	16:30	Opening ceremony	Tokyo Metropolitan Gymnasium	
16 NOV		Sprint Relay & Super Sprint Relay		
	6:30-7:00	Quarantine deadline	Hibiya Park (HLM)	6:30 for those teams directly coming to the Quarantine by themselves, and 7:00 for those who coming by official transport.
	8:00-10:00	Sprint Relay	Hibiya Park	
	12:00-13:30	Super Sprint Relay	Hibiya Park	
	14:00	Prize giving ceremony	Hibiya Park	
17 NOV		Travel to Oshima		
18 NOV	13:00-15:00	Training	Urasabaku, Oshima	
	17:00	Deadline for final name entry for the middle, the long, and the relay	Web form	Web form URL and detail will be provided by the final information.

Date	Time	Event	Venue	Note
19 NOV	10:00-14:00	Training	Urasabaku, Oshima	
	15:00-16:00	Technical Meeting	Oshima-onsen Hotel	
20 NOV	9:00	Quarantine deadline	Bus stop	
	10:00-14:00	The middle	Urasabaku, Oshima	
	15:00	Prize Giving Ceremony	Oshima-onsen Hotel	
21 NOV	8:00	Quarantine deadline	Bus stop	
	9:00-14:00	The Long	Urasabaku, Oshima	
	15:00	Prize Giving Ceremony	Oshima-onsen Hotel	
22 NOV		Rest		
	12:00	Deadline for name change for Relay	Web form	Web form URL and detail will be provided by the final information.
23 NOV		The Relay		
	9:00	Quarantine deadline	Oshima-onsen Hotel	
	10:00-14:00	The Relay	Urasabaku, Oshima	
	15:00	Prize Giving Ceremony	Oshima-onsen Hotel	
24 NOV		Travel to Tokyo		
25 NOV				
26 NOV		Closing ceremony	Tokyo Metropolitan Gymnasium	



Rules

The competitions will be conducted in accordance with the IOF rule (version: 2025) and the Technical Regulation of Deaflympics.

Unforeseen incidents not covered by the Rules and Regulations shall be dealt with as follow:

- Cases of a general nature will be resolved in accordance with the Deaflympics Regulations, General Technical Rules – Summer Deaflympics and this Technical Regulations.

- Cases of a technical nature related to competition rules will be resolved in accordance with the IOF Rules and Regulations.

- IOF rule (version: 2025)
[Competition Rules | International Orienteering Federation](#)
- Technical Regulations
<https://www.deaflympics.com/games/tokyo-2025/OR/regulations>

Classes and number of the participants

Event	male	female	mixed
Super Sprint Relay	-	-	2
Sprint Distance	3	3	-
Sprint Relay	-	-	4
Middle Distance	3	3	-
Long Distance	3	3	-
Relay	3	3	-

Training Opportunities and Model Event

Urban model & technical model

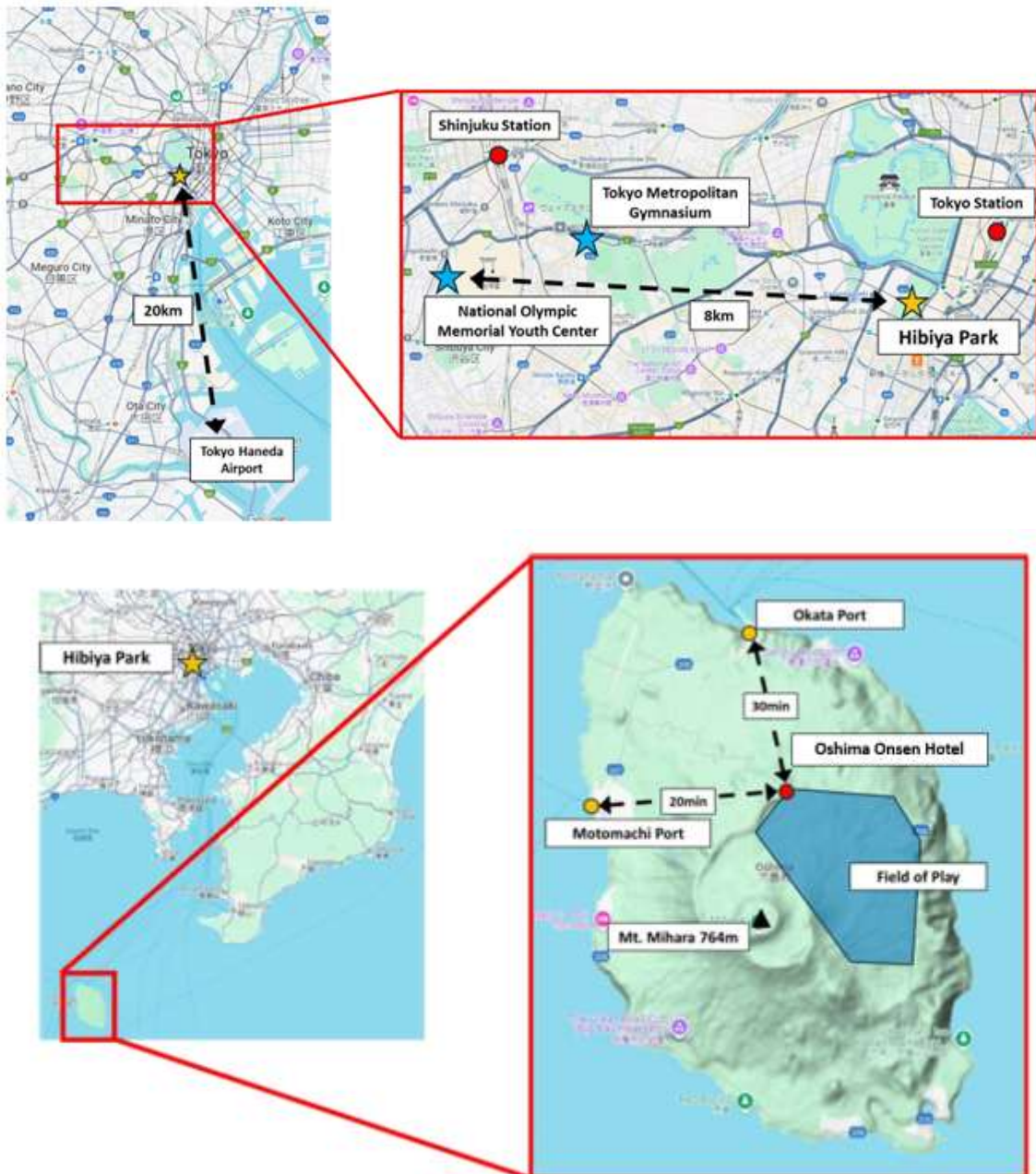
A training course for urban disciplines and map will be set up at the National Olympics Memorial Youth Center (NOMYC). The map was surveyed and drawn by the same mappers as the urban disciplines, but for a smaller area. This model will also serve as a technical model, and will show start procedure of the individual events.

Forest model and training

The training course for the forest events will be set up on Oshima Island. The area used is part of the terrain for the Forest events, and the land surface, vegetation and topographic features are representative of the events. The map was surveyed and drawn by the same mapper as the events. The start procedure for the Forest event is same as for the Sprint, and there will be no technical model for the forest event.

Location map of the terrains

Competition/Model event



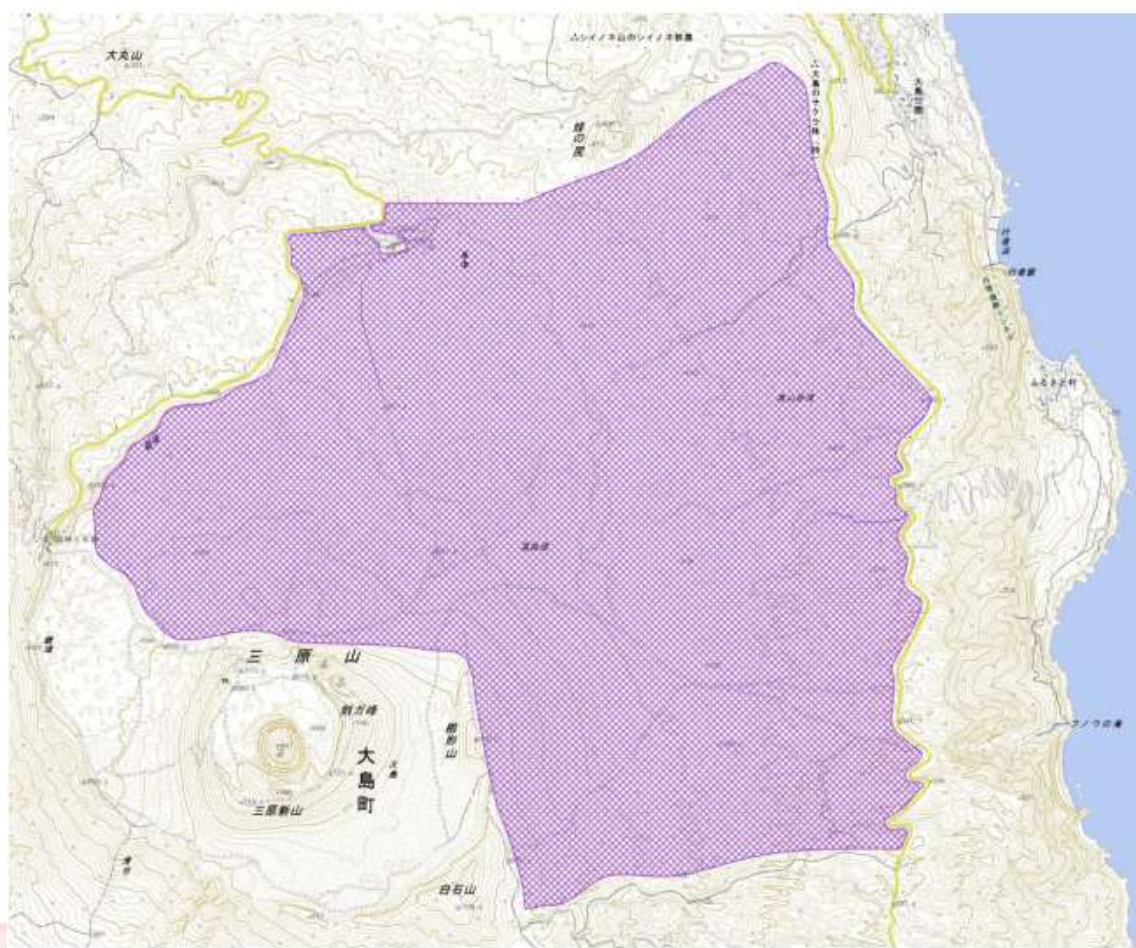
Embargoed Area

You can see the embargoed area of urban and forest disciplines from URL below;
<https://www.google.com/maps/d/edit?mid=1z0KfU2bFJKykZQAulu2frYAYaQvrd54&usp=sharing>

Hibiya Park



Izu Oshima



Terrain, hazards & climate

- Sprint, Sprint Relay and Super Sprint Relay

1. Details of the terrain

The terrain is a large municipal park in central Tokyo, surrounded by large scale commercial buildings. The park was designed in Meiji era as the first public park in Japan and consisted of complicated garden paths and several buildings of various scales. There is virtually no height difference. The area which shall not be entered or uncrossable objects are drawn according to the ISSprOM. Violation would lead to disqualification. In the area of commercial buildings, there are some narrow passages, but no complicated multilevel structure.

2. Recent sample map of the area.



3. Hazards

The terrain is an area with some pedestrians. The most of the park area is close to the public. However, competitors must be careful to avoid collisions with pedestrians.

4. Weather in Tokyo (Tokyo, 25m alt.) 15-NOVEMBER

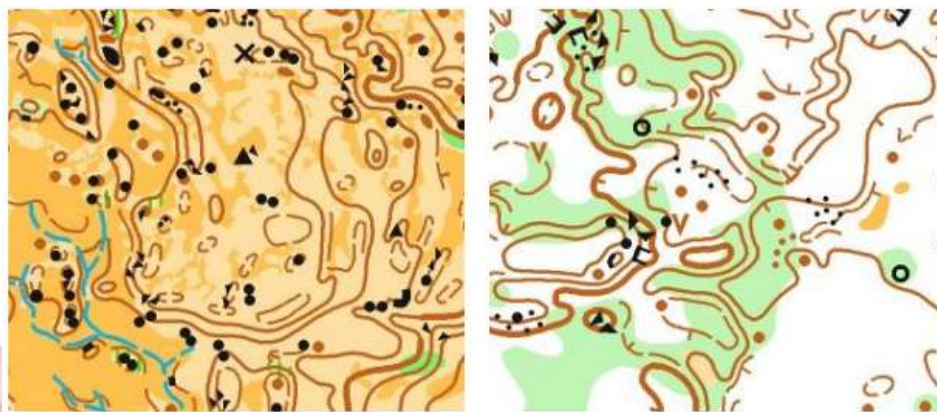
Year	Temperature	Precipitation
2024	min. 13.8°C / max. 17.7°C	7.5mm
2023	min. 9.8°C / max. 14.3°C	0.0mm
2022	min. 9.4°C / max. 14.4°C	6.0mm
2021	min. 9.5°C / max. 20.4°C	0.0mm
2020	min. 7.5°C / max. 18.6°C	0.0mm
2019	min. 9.7°C / max. 17.1°C	0.0mm

- Forest (Izu Oshima)

1. Details of the terrain

Izu Oshima is a volcanic island located about 100 km south of Tokyo. The competition area is the desert and shrub forest area on the middle of the volcano's caldera (350 to 500 meters above sea level). The area is a nature conservation area, and there are no houses, farmland, or paved roads. The ground is made of sand, or volcanic lava and rich in detail topographic features and stones. The western area has little elevation difference, but the eastern area has a gentle slope to the east. The sand area is quite open and has good visibility, and is generally runnable, but there are some areas where runnability is reduced by bush. The shrub areas are generally runnable, but there are some places where the woods are dense or short, thus speed is reduced.

2. Recent sample map of the area.



3. Hazards

Volcanic rocks are distributed throughout the area (left photo), so there is a risk of injury if you fall. The corners of the stones are often sharp, so it is recommended to wear gloves. There are fences to eradicate the invasive species, type of deer (right photo). There are some parts which look like you could pass through, but it is prohibited and you must pass through at designated crossing points.

4. Weather in Izu Oshima (Oshima, 74m alt.) 15-NOVEMBER

The table below shows the temperature, precipitation, and sunshine hours in late November on Izu Oshima Island. Due to the influence of the ocean, it has a warm and humid marine climate. There is often fog in the early mornings. There are days when strong winds blow. Although the area receives relatively heavy

Year	Temperature	Precipitation
2024	min. 9.1°C / max. 12.1°C	23.5mm
2023	min. 12.2°C / max. 19.3°C	0.0mm
2022	min. 12.8°C / max. 16.1°C	31.5mm
2021	min. 12.9°C / max. 18.9°C	0.0mm
2020	min. 20.4°C / max. 23.3°C	3.0mm
2019	min. 10.2°C / max. 17.1°C	0.0mm

precipitation, the soil is made up of volcanic ash, so drainage is good.

Maps

The maps were made according to the International Specification of O map (forest: ISOM 2017-2, urban: ISSprOM-2019-2). The contour interval for the forest map is 2.5m in order to express detail of the terrain.

- Overview of each event

Event	Map scale	Contour interval	Male/ female	Winning time	length	climbing	Nr of c	Maximum running time (min)	Nr of refressin g point
Sprint distance	1:4,000	2m	M	13	3.9	15m	26	60	0
			F	13	3.1	10m	18	60	0
Sprint relay	1:4,000	2m	M	55-60(12-15 each)	3.1	5m	19	90 (teams)	0
			F		2.6	5m	17	90 (team)	0
Super sprint relay	1:3,000	2m	M&F	36-45 (6-7.5 each)	1.4	0m	7	90 (team)	0
Middle distance	1:10,000	2.5m	M	35	4.3	200m	17	120	
			F	35	3.9	170m	15	120	
Long distance	1:15,000	2.5m	M	90	11.4	415m	21	210	
			F	90	9.3	350m	17	210	
Relay	1:10,000	2.5m	M	105 (35 each)	4.4-4.5	110m	14	210 (team)	
			F	105 (35 each)	3.6-3.7	100m	11	210 (team)	

* The precise course length and climbing will be given in the final information.

Mappers and course planners:

Event	mapper	Course planner
Urban	Kenya Takano	Jun Ijichi
Forest	Tokumasa Nishimura	Hiroki Komaki

Special symbols

These two types of objects are marked by black cross (ISOM 531)

1) A cast iron water bottle that is no longer in use



2) Large playground furniture; Approximately 1m x 1m or larger and 1.5m or higher are marked. The marked examples;



The examples of playground furniture which are not marked



3) There are many tables and benches in the park, which are not marked. Electric lights, public announcement poles, and water supply are not also marked.



Tables and benches



Electric light (left) and public announcement pole (right)

Previous map: URL will be given.

Previous maps are uploaded to the dedicated website for providing information to NDSF.

https://confirm.deaflympics2025-games.jp/en/delegations/those_involved/sports/

Punching and measurement system

The punching system produced by SPORTident will be used during the competition. Two SIACs with one finger belt and one arm belt will be provided to athletes. The athletes are requested to carry both of the SIACs to the finish. Loosing any one of the SIACs leads to disqualification.

Clothing Regulations

There are no clothing regulations, however long-sleeved shirts and long trousers are recommended for forest events. Start number bibs shall be clearly visible and worn as prescribed by the Deaflympics Regulations. Participants must observe the Deaflympics Regulations regarding advertisements on their clothing worn in the competition area.

Spike shoes including dob spike shall NOT be used in Hibiya Park. The choice of footwear is free for all events in Izu Oshima.

Event arena and the quarantine

Events	Event arena	quarantine
Urban (the Sprint, Sprint Relay, Super sprint relay)	Hibiya park /Hibiya area	Hibiya Library & Museum, Chiyoda ward
Forest (the Middle, the Long)	Oshima Onsen Hotel	The Bus stop of the official bus transportation
Forest (Relay)	Oshima Onsen Hotel	Oshima Onsen Hotel



Procedure for the protest

All sport related protests will be resolved in accordance with the IOF Rules and Regulations and will be adjudicated by the Protest Committee.

All protests must be written in English on the Official Protest Form. The form and a deposit USD\$100.00 must be given to the ICSD Orienteering Sport Director within 30 minutes after the official public posting of results through SID.

The ICSD Orienteering Sport Director will decide whether the protest is sport-related or eligibility-related. The Protest Committee will review all sport-related protests, and the ICSD Representative will review all eligibility-related protests.

The deposit of USD\$100.00 will be returned to the applicant only if the protest is considered valid.

The ICSD Orienteering Sport Director will chair of the Protest Committee.

3 Service

food & accommodation

Hibiya

- Designated accommodations for those who booked through the official travel agency.
- During the Games period, Delegation Service Desk will be established at each official accommodation facility to handle enquiries from Delegations.
- LOC will provide a complimentary laundry service for athlete Delegations who booked their accommodation via the Official Travel Agency - JTB Corp.
- Delegations arranged their own hotel accommodation may receive the service as a paid option. Detailed information will be announced on the official site shortly.

(Breakfast)

- Included in accommodation fee
- If you need to depart early and cannot have breakfast at the hotel, you can eat for free at the Deaflympic Square or Ariake Coliseum."

(Lunch)

- Delegations are responsible for arranging their own lunch.
- If you've booked the lunch option in advance, you can have lunch at the arranged location.
- Maps showing the locations of convenience stores and other food/beverage outlets near the competition venues are available. Please click or scan 2D barcode.




(Dinner)

- Delegations are responsible for arranging their own dinner
- If you've booked the dinner option in advance, you can have dinner at the arranged location.
- Paid dinner option is available at either the Deaflympic Square or Ariake Coliseum by paying on-site

Oshima

- Designated accommodations for those who booked through the official travel agency.
- During the Games period, Delegation Service Desk will be established at each official accommodation facility to handle enquiries from Delegations.



- LOC will provide a complimentary laundry service for athlete Delegations who booked their accommodation via the Official Travel Agency - JTB Corp.

- Delegations arranged their own hotel accommodation may receive the service as a paid option. Detailed information will be announced on the official site shortly.

(Breakfast)

- Included in the accommodation fee.

(Lunch)

- Delegations are responsible for arranging their own lunch.
- If you've booked the lunch option in advance, you can have lunch at the arranged hotel.
- Paid lunch option is available near the competition venue (Oshima Onsen Hotel) by paying on-site .
- On November 17, November 22 (for teams returning to Tokyo), and November 24, delegations are responsible for their own lunch due to travel between Tokyo and Oshima.
- There are no food outlets near the competition venues.

(Dinner)

- Included in the accommodation fee.

- During the competition period, beverages and the following food items will be provided free of charge in the competition venues. (Hibiya Park and Oshima onsen hotel)

No advance order is required.

- Bottled water
- Bananas
- Energy bars
- Sealed crustless sandwiches
- General information regarding meal services is available on the portal website.

Details Transportation

Bus timetable for Hibiya Park Venue

For the latest bus timetable information, please refer to “Transportation Service” page on delegation website ([Transportation Service | TOKYO 2025 DEAFLYMPICS - Games Information -](#)).

- ※ Please arrive well in advance at specified pick-up/drop-off locations to avoid missing your bus.
- ※ The outward and return journeys may not necessarily be on the same bus. Please take care not to leave any luggage behind on the bus.
- ※ You must present your ID card when boarding the bus.
- ※ If you are using public transport, please check the access information on the venue's official website ([Hibiya Park · Hibiya Area | TOKYO 2025 DEAFLYMPICS - Games Information -](#)).

Regarding travel date to Izu Oshima Island

Monday 17 November 2025

Departing from Takeshiba Passenger Terminal at 13:30, arrival at Okata Port or Motomachi Port at 15:15

High-speed jet boat service, travel time: minimum 1 h 45 min

- ※ Bus transportation is provided between specified pick-up/drop-off locations and the ferry terminal.
- ※ The above schedule is subject to change depending on weather conditions on the day.

Bus timetable in Izu Oshima Island

For the latest bus timetable information, please refer to “Transportation Service” page on delegation website ([Transportation Service | TOKYO 2025 DEAFLYMPICS - Games Information -](#)).

- ※ Please arrive well in advance at specified pick-up/drop-off locations to avoid missing your bus.
- ※ The outward and return journeys may not necessarily be on the same bus. Please take care not to leave any luggage behind on the bus.
- ※ You must present your ID card when boarding the bus.
- ※ If you are using public transport, please check the access information on the venue's official website ([Izu Oshima Island \(Ura-Sabaku Desert\) | TOKYO 2025 DEAFLYMPICS - Games Information -](#)).

Regarding travel dates from Izu Oshima Island

Saturday 22 November 2025

Departing from Okata Port or Motomachi Port at 14:30, arrival at Takeshiba Passenger Terminal at 19:45

Large passenger ship service, travel time: minimum 5 h 15 min

Monday 24 November 2025

Departing from Okata Port or Motomachi Port at 14:30, arrival at Takeshiba Passenger Terminal at 19:00

Large passenger ship service, travel time: minimum 4 h 30 min

- ※ Bus transportation is provided between specified pick-up/drop-off locations and the ferry



terminal.

※ The above schedule is subject to change depending on the weather conditions on the day.

※ Due to timing schedule of medal ceremony, it is not possible to board the ferry on competition days, return to Takeshiba Passenger Terminal will be on the day after the competition concludes.

Hand luggage (excluding personal items) permitted onboard to high-speed jet boats

Only one suitcase per person with a total linear dimension of 200 cm and a total weight of 30 kg is permitted (fee payable: ¥ 1,200 per person)

※ Personal belongings (handbags, shoulder bags, briefcases, cameras, camera accessories, small rucksacks, carrier bags, umbrellas, etc.)

※ Details regarding payment methods for baggage charges borne by the delegation will be provided later.

Regarding the return journey after arriving at Takeshiba Port from Izu Ōshima

All delegations were informed by Official Travel Agency (JTB Corp.) in May, that arrival time in central Tokyo (Takeshiba Port) is expected to be around 8 p.m.

※ Please be advised that your departure from Japan may be affected if you plan to return the same day (including late-night flights) due to possible ferry delay that may occur because of bad weather or sea conditions.

Games Service Guide

The following information regarding entry and logistics is mentioned in the Games Service Guide issued to Chef de Missions of each NDSF. Please refer to the Games Service Guide for the details.

Topic	Games Service Guide
Entry	3. Delegation Registration
Accommodation, Meal and Reservation	7. Accommodation
Transportation	10. Transportation
How to get entry visa	5. Entry into Japan
How to register media representatives	16. Media
Anti-Doping	9.6 Anti-Doping
First aid	14 First Aid Services
Insurance	15. Insurance
Medal Ceremony	11. Ceremony